

THE CARMEL SIGNAL

CARMEL CLAY HISTORICAL SOCIETY

First Quarter 2022

Established 1975

Our 47th Year



CARMEL CLAY HISTORY MUSEUM UPDATE

We are elated that our project is starting to become less of a dream and more of a reality! Some design changes are still evolving, but the essence of this building remains the same. Here are some highlights of each area:

Archival space will house our collection and educate our visitors in a two-story building connected to the museum. The ground-level space will be used for curatorial work. Walkers on the Monon Greenway will be able to stop and watch donations be cleaned or repaired.

Visitors will enter the **Main Floor** of the museum through the Danny and Debbie Dean Foyer on the way to the Tracy L. Haddad Mercantile Exhibit, which will tell the story of Carmel's history through artifacts. The main floor also includes a large central space for community gathering, the Frank and Katrina Basile bookstore/café space, public restrooms, and a ramp leading to the Monon Depot train exhibit. This floor is projected to be free to the public.

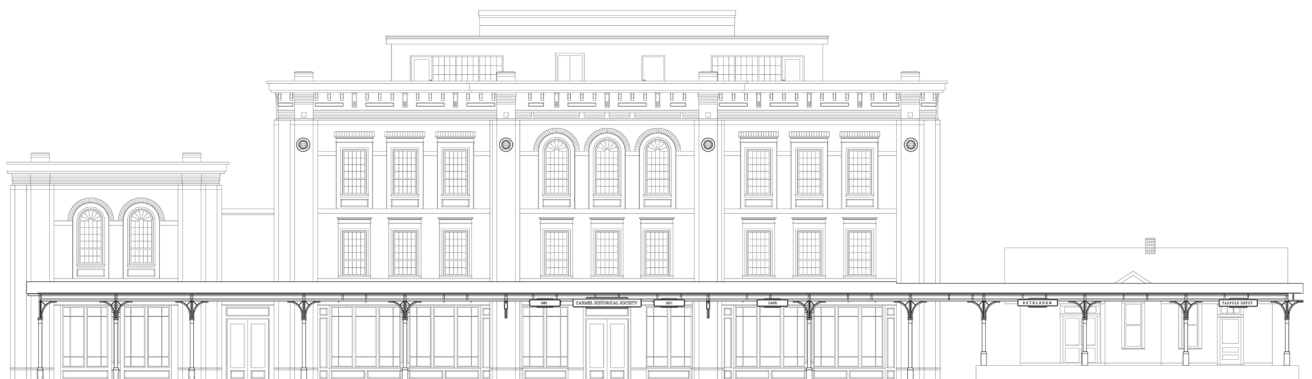
Ground Level Outdoor Space is planned in front of the Depot on a retro train platform with exterior tables and chairs. This space will be open to the public to gather and meet with friends.

The **Second Floor** will have a boardroom with a capacity of about 30 patrons for community use. This space is perfect for presentations, movies and meetings. The second floor will also have an area for temporary exhibits and room for presentations relevant to the exhibit. A quiet, smaller community room is tucked in a corner. CCHS members and paying guests will have access to this floor and all above.

The **Third Floor** showcases the Children's Area for Learning History through Play. This floor will be active, maybe noisy, and engaging. We intend to grow some history lovers! This floor also includes a permanent Farm and School exhibit funded by the Bob and Judy Huber Family and a catering space.

Rooftop Event Space can be reserved for weddings, receptions, family reunions and private parties. The space can hold over 100 people. When not reserved, this space is open to the community with great view over Midtown.

Our mission for this public facility is to welcome and engage all age groups with interesting experiences. It is our wish to demonstrate the connection of Carmel's past to its present with an eye on the city's future. Please join us to help create an outstanding museum for our community by becoming a vital donor, a creative contributor or an active volunteer. Thanks for considering how you can help!



OUR OFFICES HAVE MOVED

In preparation for the construction of the Carmel Clay History Museum, we have temporarily moved our offices. We welcome you to make an appointment by phoning 317-846-7117. You can also email us at info@carmelclayhistory.org. Our temporary mailing address is PO Box 4777, Carmel, IN 46082. If you have recently sent correspondence to CCHS, the forwarding of the letters is a bit slow. Please bear with us! We are confident that soon everything will be in line. In the meantime, we will continue our mission to collect, interpret and interpret our history.

The Monon Depot is completely empty except for a few items that will move with it to a temporary location. The decision to move the Depot offsite was made to protect the building from machines and materials needed for the construction of the new museum. There is not a set timeline for the move at this point, but we will post an update once plans are finalized. We are looking forward to the completion of the new facility and the return of the Depot to its spot along the Monon, where it will house an important permanent exhibit!

While change brings some challenges, our staff and volunteers have worked incredibly hard to make this move go as smooth as possible!



MEET OUR NEW BOARD MEMBER

Virginia Steckley is a retired small business owner alongside her husband, Jim Steckley. She grew up in Indianapolis, where she worked in her family's Lotus Garden restaurant as a young girl. Her family moved to Carmel in 1968. After graduating from Indiana University with an art degree in 1972, she worked as the opening manager of the Lotus Garden Carmel, the first Chinese-American restaurant in the Carmel area.



In 1981, she married Jim Steckley and joined him in operating Steckley's Olde House restaurant on Range Line Road. The Steckleys developed, built and operated several standalone banquet facilities, including Northern Beach Private Catering Park, Arbortorium Banquet facilities in Noblesville and Oak Hill Mansion in Carmel. Prior to joining CCHS, Ginny served as secretary of the original Carmel Main Street organization. She is looking forward to helping the Carmel Clay Historical Society achieve its goals in preserving the history of Carmel.

MEET OUR NEW MEMBERSHIP AND OPERATIONS MANAGER

Meg Fuertges, CCHS's new Membership and Operations Manager, comes to our organization with a background in communications and history. A graduate of DePauw University, Meg was a history major while also participating in the Media Fellows Honors Program. She was fortunate to successfully combine these two passions with an internship at Colonial Williamsburg, where she focused on using

modern media to engage visitors in the history of their nation. After school, Meg worked at full-service advertising agencies in both Indianapolis and Memphis, TN, where she had the opportunity to work with accounts such as St. Vincent Hospital and Health Systems, Eli Lilly, Simon, and Terminix. Upon returning to Indiana from the Mid-South, she joined the marketing department at Roche Diabetes Care, where she continued to grow her skills in project management and customer engagement.

Meg initially worked with the Carmel Clay Historical Society as a volunteer, and is thrilled to begin 2022 as an official part of the team. She believes this is an exceptionally exciting time for CCHS, as plans move forward to grow

their physical building and the collection. She hopes to assist the organization with inspiring a whole new generation of history enthusiasts. In her free time, Meg enjoys travelling to explore family genealogy, reading, and a busy home filled with the activities of her teenaged sons, husband and dogs.



Tidbits from our Facebook Page

This is a photo of our friend, Phyllis Horton Rockhill. She's standing on the running board of her father's car, which is parked in front of his store, Horton's Meat Market, in the first block west of Range Line Road on West Main Street. Oakley Horton opened the store in 1926 and operated it until 1955. In addition to meat, he also carried a full line of groceries.

The photo was taken in 1929, which would make Phyllis about 5 years old. She graduated from Carmel High School in 1942 and taught 4th grade in Carmel for 30 years! Some of you were probably in her class.

Carmel was small town back when the picture was taken. The population was only 682. The streetcar still ran through town and Range Line Road was a branch line of the Dixie Highway!



CARMEL HISTORY BOOKS

If you are interested in learning more about Carmel's history, we have a series of books on a host of topics. To order any of the titles below, visit our [website](#). You can also find them at All Things Carmel on West Main Street. A new book is underway now and will be available this spring!

Greyhound Legends – the history of Carmel High School athletics from the mid-nineteenth century to the 1980s.

The Preacher and the Constable – the story of the shootout at the livery stable in 1900 that resulted in the deaths of “Cyclone” Johnson and Constable Frank Carey.

Stories from the Boom Years – history of how the gas boom and improvements in technology and infrastructure transformed the town around the turn of the century.

Ketchum's Town – a history of the Lenape village and people who lived in what is now Carmel.

Bethlehem and the Pioneer Settlements of Carmel – detailed account of pioneer life in Carmel,

Curtis Bales and the Carmel Baseball Club – history of baseball in Carmel from the late-1800s to the development of Carmel's championship ball club in the early 1900s.

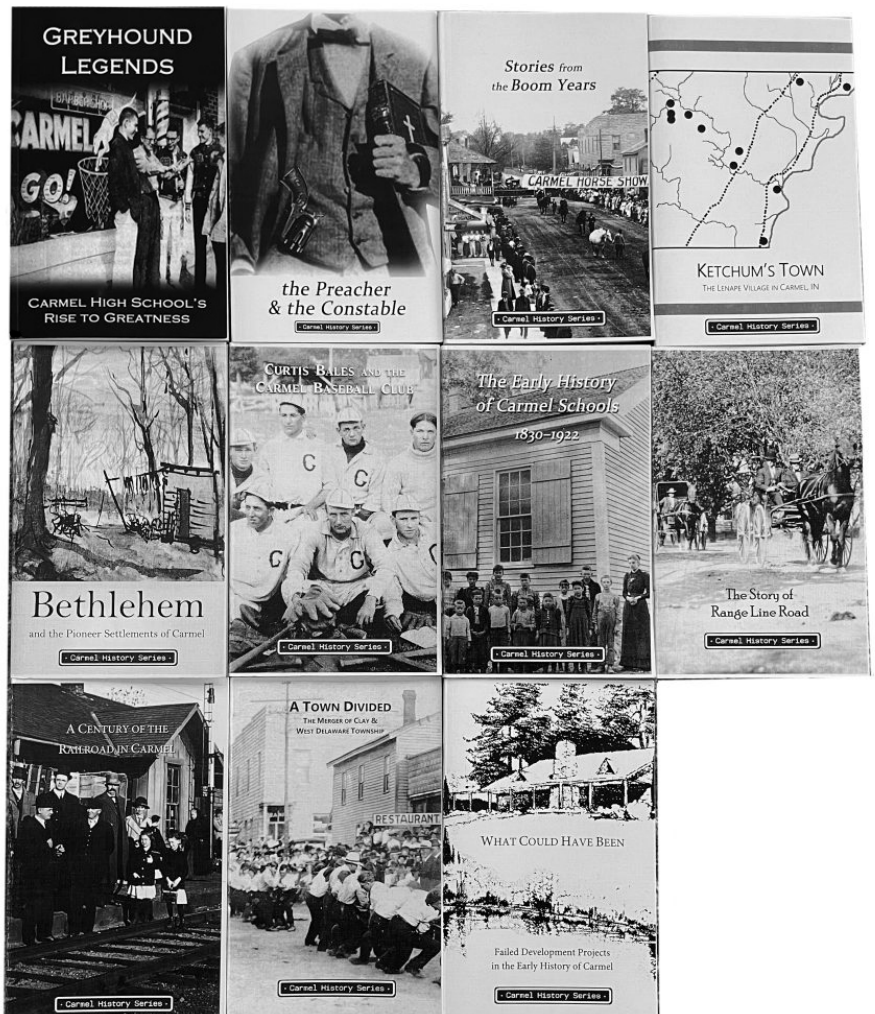
The Early History of Carmel Schools – a detailed history of Carmel schools from 1830 to 1922 with pictures of the one-room schoolhouses.

The Story of Range Line Road – the story of Range Line Road from the pioneer days through the gravel road era to the town's campaign to route the Dixie Highway along the road in the early 1900s.

A Century of the Railroad in Carmel – history of how the Monon and interurban railroads transformed Carmel.

A Town Divided – the story of the century-long effort to consolidate West Delaware and Clay Township.

What Could Have Been – a history of five projects that would have altered the development of Carmel had they been completed.





CARMEL CLAY HISTORICAL SOCIETY: BY THE NUMBERS



2,299

people visited the Monon Depot Museum

99

people attended our Polar Express Evenings



271



Carmel High School history students visited the Depot and consulted our staff for their National History Day projects



393

total Legacy Bricks sold since 2019



904

students from eight schools participated in historic walking tours



MESSAGE FROM OUR EXECUTIVE DIRECTOR

Our expectations for 2021 were met and exceeded thanks to our generous donors, engaged members, and a newly formed Advisory and Fundraising Committee for the highly anticipated Carmel Clay History Museum. CCHS operating donations were strong this year, and we are grateful for the support. These funds allowed us to hire a much-needed fourth part-time employee.

The funding for the new facility will be achieved through a public-private partnership. Clay Township’s generous support will provide funding for the construction of the museum. Funding from the City of Carmel’s Redevelopment Commission will provide marketing, design and exhibit fabrication. CCHS will raise \$3 million for interior furniture, fixtures and equipment for the museum.

A Capital Campaign was initiated in 2021 and was generously supported by early donors. The CCHS board and staff unanimously donated and pledged funds to this essential campaign. Included in the current Capital Campaign funds are monies previously raised from an earlier campaign and profits from a land sale for the Monon Greenway expansion. We have and will continue to pursue a variety of grants for the museum equipment.

In December, the Allen Whitehill Clowes Charitable Foundation generously provided \$500,000 toward our cause and brought us halfway to our goal. We are dedicated to prudently using these funds to create vibrant, active and educational experiences in the Carmel Clay History Museum for our citizens and visitors of all ages. While the museum plans were delayed due to supply chain disruption, groundbreaking is slated for this summer. This step up to a new museum is a big one for the Carmel Clay Historical Society, but with the teamwork of our members and community, the dream of a museum held by so many for so long is becoming a reality. Thank you for helping us!

– Debbie Gangstad

GRANTS

CCHS is most grateful to the generous organizations that have supported us this year. The City of Carmel Arts Grant provided \$3,000 for a watercolor depiction of the rail pen structure built by the city’s founder in 1832. The Indiana Historical Society provided a \$3,700 Heritage Support Mini Grant to enhance our Monon train exhibit. This grant funded a shadow box historical train layout and an elevated G-gauge railroad track. We received a Hamilton County American Rescue Plan Act grant of \$8,250 for Covid recovery. We were also fortunate to receive a \$500,000 grant for the museum’s capital campaign from the Allen W. Clowes Charitable Foundation.

CORPORATE SPONSORS

Church, Church, Hittle + Antrim	\$1000
Old Town Design Group	\$1000
Engledow Group	\$500
National Bank of Indianapolis	\$500
MEG and Associates	\$500
Bussell Family Funerals	\$300
All Things Carmel	\$250

Brad Esch of Lightscapes decorated the Depot with exterior lights.

Meyer Plastics Company donated plexiglass for the train exhibit at the Depot.

VOLUNTEERS

Every non-profit organization depends heavily on volunteer support. Carmel Clay Historical Society is grateful for the volunteers who staffed our events, welcomed visitors to the Depot, accessioned donated items, and moved CCHS items to our new temporary archives space.

Volunteer of the Year

Brendan White, who was also Volunteer of the Year at the Westfield Washington Historical Society, worked tirelessly for CCHS this year, and we are very grateful for his time and energy!



Favorite Volunteer Stories

The gardens for this year's Garden Tour were outstanding, as were the host of volunteers who worked in high temperatures to make it a fun event for patrons and a successful fundraiser for CCHS. Thank you, Garden Tour Volunteers!

The Carmel Boy Scout Troop #733 volunteered to help CCHS move desks, tables, chairs and shelves from the former PNC Bank to our temporary storage facility. The scouts and their parents cheerfully hauled heavy furniture up and down stairs, and we were so grateful for the help. Thank you, Troop #733!

In late January 2022, CCHS received a 20-foot porcelain sign that had been on the Monon Railroad terminal in Indianapolis many years ago. The sign was estimated to weigh 300 lbs. and was stored in a barn in Crawfordsville. We posted a plea for help on Facebook and seven Wabash College students organized by Nathan Felix, a CHS alum, answered the call. They showed up early on a freezing Saturday morning and hauled the sign out of the barn and into our truck. Thank you, Wabash College TKE's!

When we arrived in Carmel with the sign, there was a hard-working group of volunteers waiting to move the sign into our temporary archive. This group also helped us move a wide variety of items out of two office spaces with determination and terrific attitudes. Thank you, Moving Crew!

I wanted to share these stories to recognize the sweat-equity support we also have received this past year. We have relied on the teamwork and support of our the community in the past, and it is the community that will enable us to build and furnish the Carmel Clay History Museum this year.

Garden Tour Volunteers

Susan Boynton, Tammy Collins, Janet Daniels, Nick Davis, Jan Frost, Janet Guildenbecher, Julie Kingston (and her parents!), Alecia Larkin, Vivian Lawhead, Larry Lawhead, Christine

Owens, Sherry McVey, Cindy Reissaus, Keith Reissaus, Lisa Rogers, Brad Sexauer, Pam Smith, Fred Swift, Deb Teets, Caroline Zoba and the plein air artist on site, Carol Skinner.

Carmelfest Volunteers

Tammy Collins, Nick Davis, Emily Hanawalt, Julie Kingston, Cindy Reissaus, Keith Reissaus, Brad Sexauer, Brendan White

Depot Docents

Diamond Benson, Tammy Collins, Ayaan Abbasi, Michele Davitt, Bella Davis, Nick Davis, Mark Edgreen, Janet Guidenbecher, Julie Kingston, Alecia Larkin, Vivian Lawhead, Christine Owens, Terry Prather, Jim Pierce, Cindy Reissaus, Lisa Rogers, Saravanan Selvan, Brad Sexauer, Judy Singleton, Fred Swift, Abigail Watson, Brendan White.

Walking Tour Guides

Rhonda Alexander, Kelly Braun, Suzi Butz, Tammy Collins, Jessica Corthier, Michele Davitt, Julie Kingston, Pam Otten, Jim Pierce, Cindy Reissaus, Lisa Rogers, Brendan White, Andy Wright, Caroline Zoba

Moving Crews

Boy Scout Troop #733, led by Julie and Brent Johnson and other parents with their scouts helped us move furniture from the closed PNC Bank along with Nick Davis, Emily Hanawalt, Austin Moore and Andy Wright.

Archives Movers: Dean Barratt, Steve Bixler and son, Katherine and Paige Dill, Meg Fuertges, Chris Gray, Katie Gray, Emily Hanawalt, Austin Moore, Theresa Rendell, Cooper Walchle, Andy Wright and Carmel High School students Faith Austin, Tsion Daniel, Manav Musunuru, Matt Wagner, Terry Moriarity, Dev Methur, Dariush Khurram, Tanuj Mangalam, Sean Truax, Sam Utzig, Ethan Utzig, Bhavi Vishnumolakala.

Monon Depot Exhibit

Dave Burns, Charlie and Barbara Malinowski, Mick Hinkle



ANNUAL INDIVIDUAL CONTRIBUTORS

Thank you to our Annual Contributors! Your contributions totaling \$33,702 supported our effort to collect, preserve and interpret our local history. We are grateful for your generosity and your participation in our mission.

\$10,000+

Anonymous

\$1,000+

Betty Clark in memory of Eric Clark
Eileen Kitchens
Roxanna Morgan
Karri Phelan
Jim & Patty Russell
Central Indiana Model Railroad Association

\$251-\$500-

David & Lori Gilreath
Jennifer Hershberger
Charles & Lynn Lazzara
Brad & Meg Osborne
Bruce & Jan Reynolds
James & Connie Titak
John & Carol Valentine

\$101-\$250

Kenneth & Sharon Bassler
James & Joyce Burrell
Carmel Tri Kappa
Rose Schnell Cole
Randy & Jo Craig
Nick & Cheryl Davis
Dr. Darin & Katherine Dill
Dr. Jim & Sue Dillon
Helen Phillipow

Sandra & Gary Dowty in memory of Mary and
John Gradle
Jack & Debbie Gangstad in memory of Eric
Clark
Judy & Ron Hagan
Craig Ito
Nick Kestner
Jeff & Julie Kingston
Lisa Korba
Vivian & Larry Lawhead
Rebecca J. Magnus
Dan & Sue McFeely
Mo Merhoff
William & Christine Owens
Jim Pursel in memory of Sam Pursel
Jane & Thomas Salentine & Family
Bonnie Williams
Steve & Bev Weaver

\$51-\$100

Joan & William Ball
C.V. & Donna Barion
Sue & Gohmer Butcher
Doug & Luann Callahan
Charles & Ann Conrad
Dorothy Cord
Phil & Judy Dunlap
Bruce & Kate Emrick
Patricia Thurston Enney
Betty Estridge in memory of Bill Bales
Dick & Barbara Gibson
Frances Hageboeck
Carol Hinkley
Larry & Connie Kane
Jim & Linda Keller
Randall & Judy Koorsen
Sharon & Dale Mansberger



Thomas & Lisa Mills
Suzy Moore
Fred & Kathy Ost
Charlene Park
Tom Pluchar in memory of Myron Rockhill
John & Karen Rockhill in memory of Myron
Rockhill
David & Marcia Runkel
Michael & Karen Schweinfest in memory of
Don Hershberger
Jim & Judy Singleton
Dave & Johanna Smith
Rob & Marie Smith
Fred Swift
Deb Teets
Jeff Watkins

\$26-\$50

Ila Badger
Janice & Jay Brill
Dan Chapman
Don & Nancy Childs
Glen & Sue Collier
Joe & Michele Davitt
James & DiAnn Donahue
Mary Ann Grass in memory of Dave Grass
Sue Ellen Greenlee
Janet Guildenbecher
Duke & Tammy Hardy
Susan Haskett
Joseph Hunter
Donald Jeffries
Craig & Sharyn Kaiser
Richard & Margaret McNamara
James Meindl
Eric & Kim Moffett in memory of Myron
Rockhill

Pamela Otten
Dixiana Packard
Greg & Wendy Phillips
Jeff Price
Jane Reiman
Lisa & Jeff Rogers
June Ann Roberts
Joan Wischmeyer

\$10-\$25

Bev Agnew
Von & Jean Ballew
Lois Bowen in honor of CHS class of 1945
Christine Gordon in memory of Hap Gordon
Megan & Martin Gregor
Emily Hanawalt
Kerrie Hannigan
Elly Hoffman in memory of Jack Hoffman
Judith Inskeep
George & Donna Jones
Doug & Judy Kniptash
Craig & Julie Kunkle
Jo Ann Myers
Ted Prather
Jane Price
James & Paulette Reilly
Joyce Rogers
Russell & Ruth Schwartz
Dean & Leslie Theofanis in memory of Eric
Clark
Mark & Heather Urtel
A.J. Wright

**BOB AND JUDY HUBER
MEMORIAL DONATIONS**

Judy and Bob Huber supported Carmel Clay
Historical Society from its founding. Judy's
service as a charter member, board member,



volunteer and donor were deeply appreciated. Her great sense of humor made working on CCHS's Holiday Home Tour lots of fun. She and Bob were a true team. They were honored as the 2020 recipients of Carmel Clay Historical Society's Heritage Award in appreciation for their generous support. We are ever grateful for their planned gift to CCHS. Their sons designated these funds for a museum room named for their parents. Their loving friends listed below donated \$7,110 in memory of the Hubers.

Joseph C. Bentivoglio
Jim & Marianne Brocke
Doug & Luann Callahan
Don & Nancy Childs
Betty Clark
George & Connie Clark
Matt & Jan Cohoat
Robert & Mary Sylvia Coma
Dottie A. Davis
Judith Dean
Drake Purebred Farms Inc.
Waneta Dunkerly
Bruce & Kate Emrick
David & Mary Ann Ferrin
Robert G. Fearrin
Jack & Debbie Gangstad
Sandra Goodall
Fred Hecker
Dr. Tim & Sandy Hodges
Mr. Mike & Rev. Corrinne Hodges
Elinor Hoffman
Craig & Sharyn Kaiser
Donald & Marilyn King
Frances Martin
Ellen G. McElfresh
C. Lee & Daphne Mitchell
Joyce Rogers
Sharon Rosenburgh

Michael & Judy Smerdel
Errol & Judith Spears
Judith Ann Sweeney
Virginia Terpening
Dorothy L. Titsworth
Ann M. Traverse
Jay & Sarah Traverse

2021 CAPITAL CAMPAIGN DONATIONS AND PLEDGES

In 2021, we kicked off a capital campaign to raise funds for the buildout of the Carmel Clay History Museum. We are grateful to the many people who donated or pledged a total of \$1,500,000 for this important project.

Anonymous
Mike and Amy Alley
Frank and Katrina Basile
Betty Clark
Nick and Cheryl Davis
Danny and Deborah Dean
Dr. Darin and Katherine Dill
Waneta Dunkerly and Family
Debbie and Jack Gangstad
Tracy L. Haddad Foundation
Emily Hanawalt
Jennifer Hershberger
Judy and Bob Huber Family
Mark and Sharon Kibbe
Jeff and Julie Kingston
Larry and Vivian Lawhead
Dan and Sue McFeely
Meg and Brad Osborne
William and Christine Owens
Lisa Ross and Susan Phelan
Phelan Family Foundation
Angie Phelan Watson
Reese Family Foundation



Brad Sexauer
Fred Swift
Deb Teets
A. J. Wright

MEMBERS

Our membership base is foundational to everything we do at CCHS. We are so grateful to our members, new and old, who help us collect, interpret and preserve the history of our city.

Household

Nicole and Adam Aasen
Donna Adams
Bev Agnew
Don Allen
J. Michael and Virginia Antrim
Jan and Michael Arbuckle
Von T. and Jean Ballew
Richard and Diane Beardsley
Clifford Bennett
Rachel Bergman
Wanda Blanton*
Susan Bock
Bob and Susan Boynton
Janice and Jay Brill*
Julia and Mickey Brooks
Stephan and Vicky Brown*
Joan Bryant
Jeff and Ruth Bugher*
James and Joyce Burrell
Cynthia Bushey
Donna Bussell
Sue and Gohmer Butcher
Doug and Luann Callahan
Christine and Steve Campbell
Eleanor Carter
Don and Nancy Childs

Betty Clark
David and Sue Clark
Tamitha and James Collins*
Charles and Ann Conrad
Dorothy Cord
Jay Cotton
Cheryl Craig
Ruthann Croda
Thomas and Susan Dapp
Dottie Davis
Nick and Cheryl Davis
Michele and Joe Davitt
Lori Dearing
Janet Delello*
Nancy Dierdorf
Katherine and Dr. Darin Dill
Dr. James and Sue Dillon
Lee, Marg and Douglas Dolen
Don and Elly Douglass
Kevin and Raquel Dowley
Driver Reach LLC *
Bernard and Kimberly English
Sue Finkam
Margo Finney
Terry and Jane Fleck
Brian and Meg Fuertges*
James Garretson
Dick and Barbara Gibson*
Christine Gordon
Mary Ann Grass
Don and Lynette Gross
Janet Guildenbecher
Frances Hageboeck
William and Tamara Hardy
Susan Haskett*
David Heighway
Jane Herndon



Carol Hinkley
Gerald Hughes*
Joseph Hunter
Judith Inskip
Craig Ito
Jean Jansen
Doug Johnson
Craig and Sharyn Kaiser
Larry and Connie Kane
Jim and Linda Keller
Dee Kerber
Theresa Kerber
Jane Kessler
Carole and Dean Kimsey
Doug and Judy Kniptash
Arlene Koberna*
Jerwana Laster
Charles and Lynn Lazzara
Cathy and Dick Lesh
Dan and Connie Logan
Dan and Sue McFeely
Charlotte McKinzie
Richard and Margaret McNamara
Marilyn Melangton
Mo Merhoff
Sharleen Miller
Carolyn Mitzel*
Eric and Kim Moffett
Katherine Moffett
Jayne and Dick Moore
Suzy Moore*
JoAnn Myers*
Ryan and Megan Osborn
Meg and Brad Osborne
Elnora Osler
Fred and Kathy Ost
Pamela Otten

Christine and William Owens
Wendy and Bruce Pallman
Carolyn Parrott
Wendy and Greg Phillips
James Pierce*
Sara Pike
Jace Platt
Nancy Prosser
Jim Pursel
Ken Racke
Patricia Ragan
Mark and Janet Raymond
Jane Reiman
Joyce Rogers
Lisa and Jeff Rogers
Belinda Rulon
Diann Ryan
Jane and Thomas Salentine
Andrew Schneider
Russell and Ruth Schwartz
Gwen Shaneck*
Jill and Scot Shively
Jackie and Robert Smith*
Sarah Smith*
Fred Swift
Deb Teets
Virginia and Bob Terpening
Jane Thompson*
Patricia Thurston Enney
Donna and Mart Tutwiler
Carol and John Valentine
Ina and Jim VanDuyne
Jeff Watkins
Trudy Weaver
Barbara West*
Nathan White*
Joan Wischmeyer



Brian J. Wise
Amanda Woodbury*
Larry and Carolyn Woodling
Carmen Wright*
Kimberly Wyatt*
Terry Young*
Joseph and Sue Zaharako
EnergyNet *
Museum of Miniature Houses and Other
Collections

Teacher

Phil Conklin
Terrel Ann Gagermeier
Brian and Liana Giles
Daniel Racke*
Allison Schmidt
Joy Stafford
Marilyn Thomas
Mark and Heather Urtel
Allen County Public Library, Genealogy Center

3-Year

James Blessing
Donna and Greg Bonnell
Sandy Bowling*
Marcia Bracken
Bob and Diane Braun
Johneva Campbell
Laura and Rick Campbell*
Danny and Deborah Dean*
James and DiAnn Donahue
Gary and Tracey Dufek*
Peg Durrer
Jim and Elaine Engledow
Robert and Jenell Fairman
Robert Ferrin

Jo Ellen Flynn
Ron and Veronica Fritz
Scott and Tricia Hackett*
Ali Jafari
Doug Kari
Scott and Jenny Kennedy
Nick Kestner, III
Rebecca J. Magnus*
Sharon and Dale Mansberger
Dixe and Ken Martin
John Mohr
Kay Mulhall*
Roger and Winnie Nestle*
Dixiana Packard
Lily Pai*
Paul and Elizabeth Reifeis
Keith and Cynthia Reissaus*
Gary and Roberta Ringham
William Sanders, Jr.
James and Karen Schneider
Joni Scott
Tony and Amy Snider
James and Virginia Steckley
Bonnie Williams

Dual

Mary Jane (Bea) and Mike Becher
Marion Haerle*
Judith Lackey-Bunnell*
Lynn Yaeger

Life

Vern Adkins, Jr.
Leslie Archer
Joan and William Ball
Susan Ball
C.V. and Donna Barion



Ellen Barmore
Stewart Bick
Geneva Kinzer Billhymer
James and Kathy Bolander
Mark and Celia Booher**
Lois Bowen
Jim and Jeannette Bradford
Robert Brown
Roy and Mary Cage
Marilyn Campbell
William and Donna Clary
Randy and Jo Craig
Chris Davis
James Davis
Michael and Margie Draper
Dianne Duncan
Waneta Dunkerly
Phil and Judy Dunlap
Mary Jo Edwards
Betty Estridge
John Etter
Cal Field
Helen Filipow
Sue Fleener
Myron Frank
Debbie and Jack Gangstad
John and Annette Graves
Hilda Hadley
Ron and Judy Hagan
Dave and Shirley Hamer
Chuck and Cheryl Hazelrigg
Fred Hecker
Joanne Hedberg
Jennifer Hershberger
Nancy Hinshaw
Julie Holloway
John Holmes

Don Horton
George and Donna Jones
Melisa Keiser
Sharon and Mark Kibbe
Sherry Kimmerling
Winifred Kincaid
Jeff and Julie Kingston
Jacque and Steve Kirsh
Wayne Knotts
Jean Kyle
Vivian and Larry Lawhead
Jim Lewis
Ronie Lewis
Winston and Sandra Long
Don Katz and Lynda Goeke**
Sue Maki and Tom Kapostasy
Douglas McGuire
Josh McRoberts
Kathryn McWilliams
David and Barbara Mitchel
Rosie Mitchel
Thomas Mitchel
Eleanor Moffitt
Sue Moreland
Roxanna Morgan
Phyllis Morrow
Bill Murden
Jerry and Kay Myers
Rodney Myers
John Osler**
Jill Perelman
Mary Ann Perrin
Karri Phelan**
Jane Pierce
Jean Pluchar**
Bill Pursel
Rosie Pursel



Ruth Rahke
Dina Randall
Cathie Reamer
Jill and Jason Reese
Sharon Retzlaff
Joe and Leanna Roberts
June Ann Roberts
Tom Roberts
Phyllis Rockhill
Tom and Barbara Rumer
Gary and Jackie Runyon
John and Laura Rutherford
Betty Sanford
Arnold Savage
Rose Schnell Cole
Judi Silverman
Jim and Judy Singleton
Carol Skinner
Johanna and Dave Smith
Robert and Marie Smith
Hank Starkey
Marjorie Stubbs
Karl Swain
Sally Van Overmeiren
Kathy Venable
Rosemary Waters**
Bill Watts
Steve & Bev Weaver
Mike & Lisa Wheeler
Dianne Wiggins
Douglas and Jayne Ann Wilson
Anna Wisenberger
Nancy Worysz
CHS Alumni Association

* indicates new member in 2021

** indicates new Life member in 2021

**SPECIAL THANKS IS EXTENDED
TO OUR CORPORATE MEMBERS:**



CCH+A, Old Town Design Group, Engledow Group,
The National Bank of Indianapolis, All Things Carmel,
Meg & Associates, Bussell Family Funerals,
Shepherd Insurance, Carmel Welding, Ceramica,
Musselman Landscape Solutions, Current in Carmel,
Range Line Self Storage, The Barrington,
Wedgewood Building Co., Sun King Brewery,
and Anthony's Chophouse

CARMEL CLAY HISTORICAL SOCIETY
317-846-7117 • www.carmelclayhistory.org
info@carmelclayhistory.org
Facebook: Carmel Clay Historical Society